



Penta Bellevue

A Beautiful View

By Pentagon Construction

@ Virudhunagar



Our vision is to provide luxurious home at an affordable price.

Our Mission is to ensure quality while providing every lifestyle features possible.

PENTAGON
CONSTRUCTION

+91 979 183 3876 / 709 494 9644

support@pentagonconstruction.in

www.pentagonconstruction.in

North Facing Villas

Ground Floor



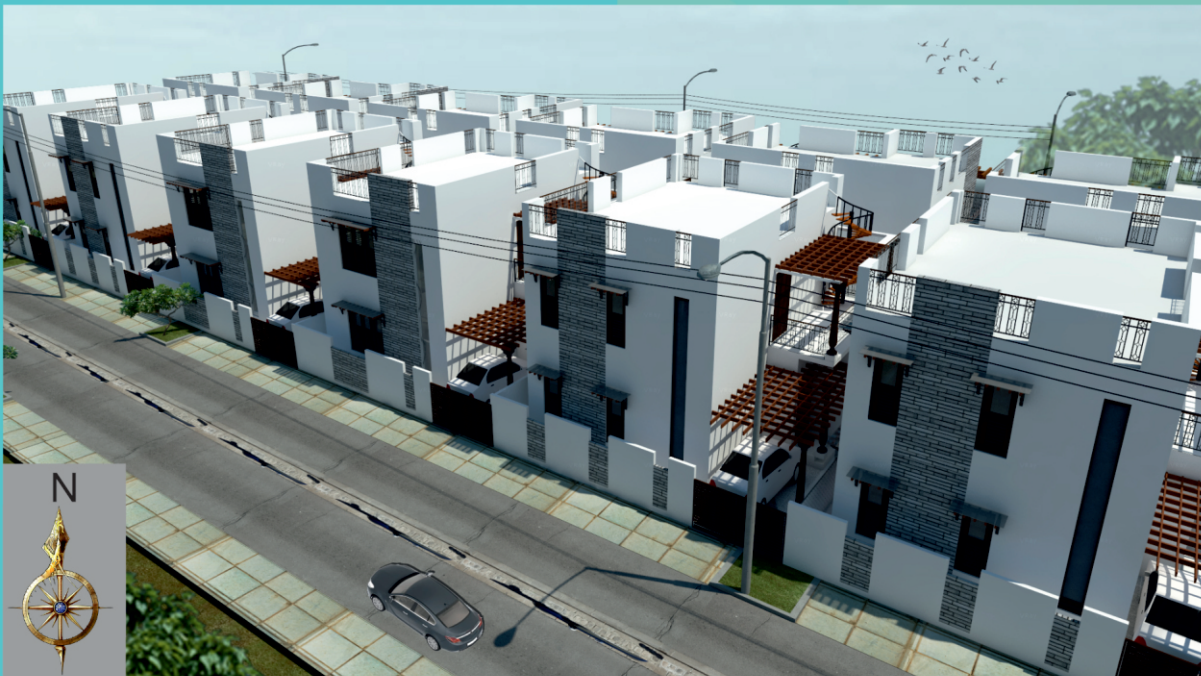
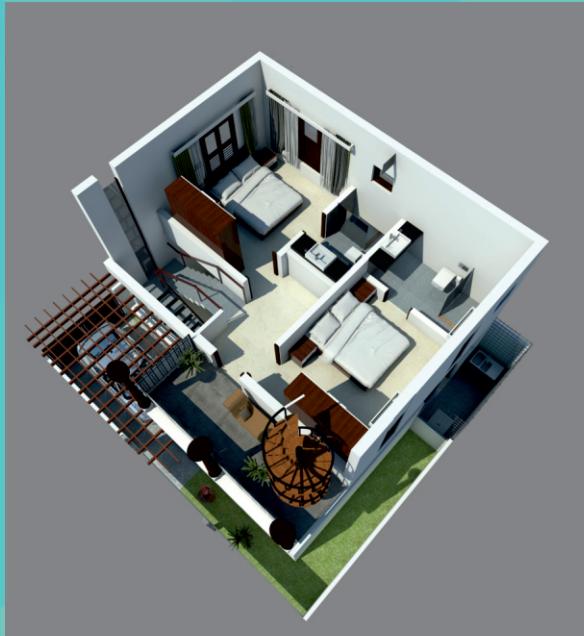
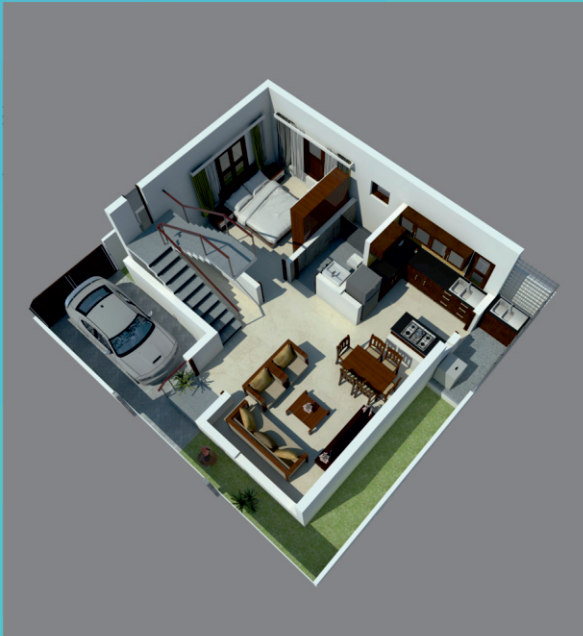
First Floor



Ground Floor



First Floor



South Facing Villas

PLOT DIMENSIONS	AREA
Type 1 - 32'6" x 33' Plot Nos - 1,2,27,28	1075.8 Sq.ft
Type 2 - 32'6" x 30' Plot Nos - 3to12A&16to26	978 Sq.ft
Type 3 - 32'6" x 28'3" Plot No - 14	922.5 Sq.ft
Type 4 - 32'6" x 20'9" Plot No - 15	681.3 Sq.ft

NORTH FACING UNITS
14 Nos: 1 to 14

SOUTH FACING UNITS
14 Nos: 15 to 28

(Approx. 1250 Sq.ft Built up Area)

Total No. of Dwelling Units - 28 Nos

Principal Architect: Meera Natampally
Project Architects:
Manavi Puligal & Priyanka.J.Rao

S E K O S ARCHITECTS & INTERIOR DESIGNERS
#3148, 2nd Cross, 4th Phase,
VBCHS Layout, Girinagar,
Bangalore - 560085.
Ph: 080-26723424
E-mail: sekosarchitects3148@gmail.com



Location
The project Penta Bellevue is situated at Virudhunagar, Sulakari Panchayat, along the NH 7 (Tirunelveli Highway). The location is just opposite to Virudhunagar Textile(VT) Mills and less than a kilometer from Virudhunagar Collector Office.

Specification

Structure

- RCC Framed Structure
- Walls made of Bricks

Doors and Frames

- Main door - Teak Wood Frame, Paneled Shutter
- Internal door - BST shutters
- Toilet door - OST shutters

Windows

- Glass Pane with wooden frame doors
- Iron Gril
- Provision for mosquito mesh

Kitchen

- Provision for Modular Kitchen
- Provision for RO / Water Purifier
- Granite Kitchen Table
- Provision for Microwave

Utility

- Provision for Washing Machine
- Provision for Cleaning / Drying

Flooring

- Kitchen & Utility : Granite
- Living, Dining : Vetrified Tiles
- Bedrooms : Vetrified Tiles
- Pathways : Vetrified Tiles

Railing

- Staircase - MS Railing or equivalent
- Balconies - Iron or equivalent



1/407,D.P-2,
SIDCO Industrial Estate
Sulakkarai,
Virudhunagar,626003

+91 979 183 3876 / 709 494 9644
support@pentagonconstruction.in
www.pentagonconstruction.in